

KADHDHOO INTERNATIONAL AIRPORT DEVELOPMENT



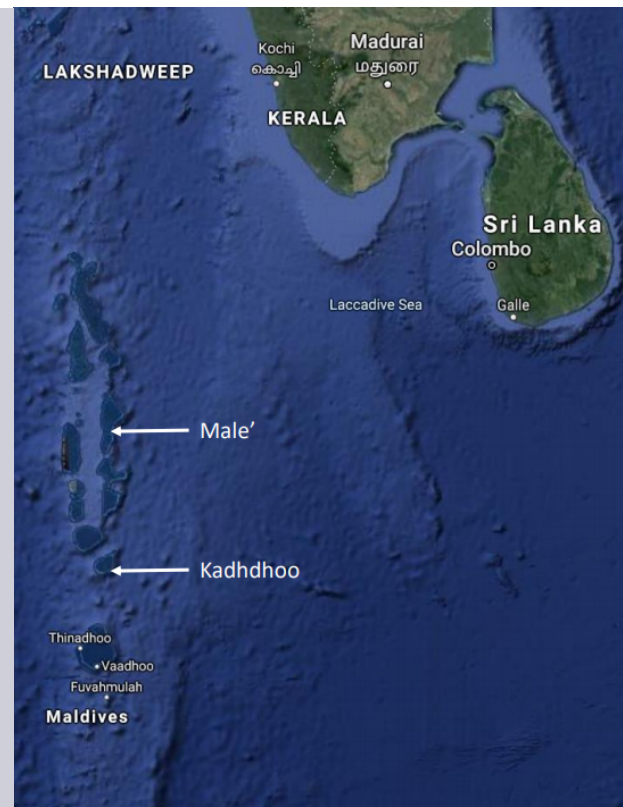


Project Site

Kadhdhoo Island
Laamu Atoll
South Central Maldives

Land area:
107 Ha./ 264 Ac.

Distance from Male': 256 km
Distance from Colombo: 900 km
Distance from Delhi: 3007 km



Scope:

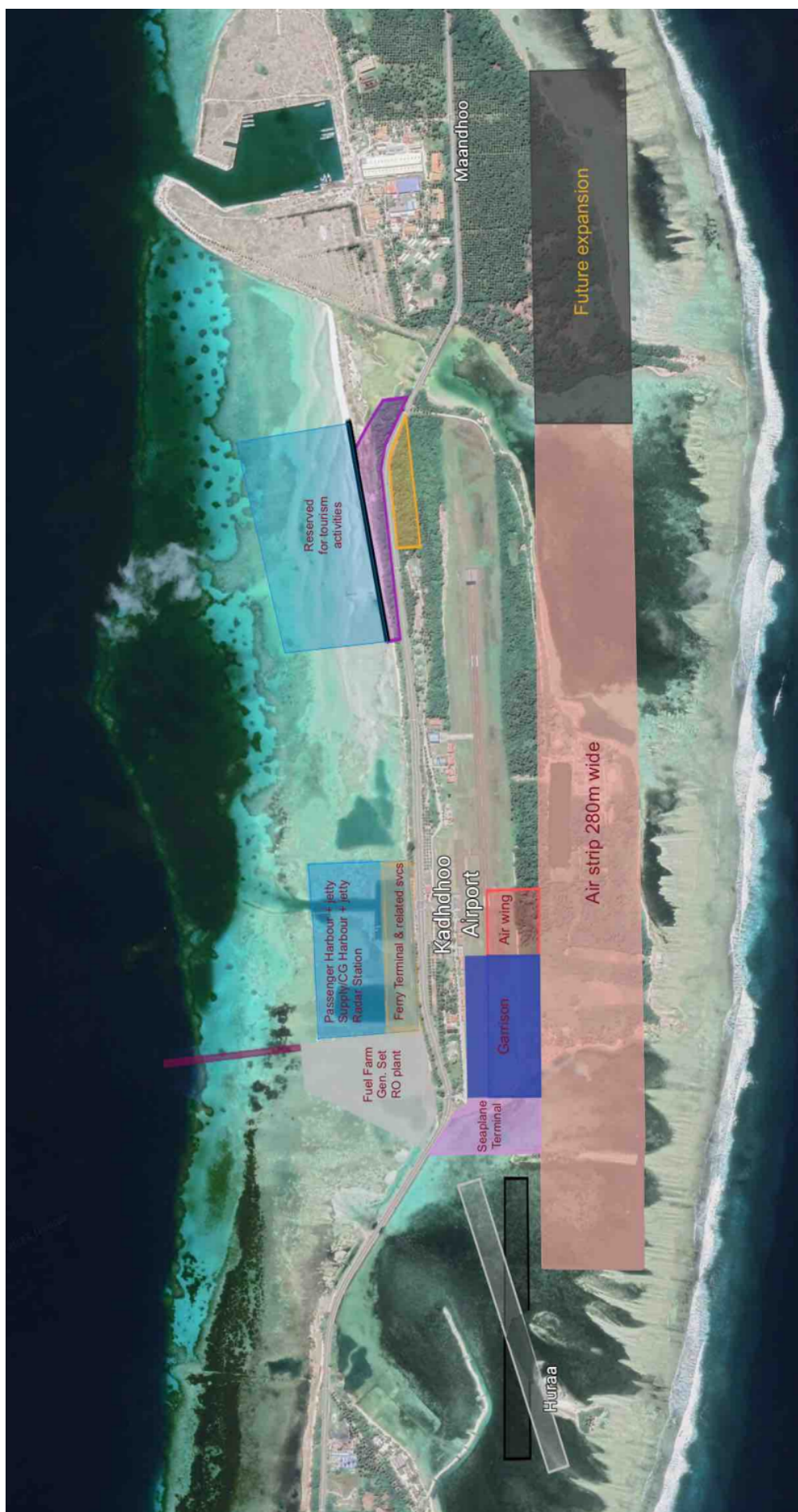
- Runway 2400m x 45m - design aircraft type A320
- Dredging, reclamation & shore protection
- ATC tower
- Aprons, taxiway, hangers
- Fuel farm
- Roads and utilities
- Harbor, supply and passenger jetties
- Vehicles, machineries and equipment
- Passenger terminal (with retail outlets and other amenities)
- Office buildings
- Seaplane runway, terminal and platforms
- Cargo complex and bonded warehouse
- Inflight catering
- Lounge
- Airport to cater to direct flights from the Middle East, South East Asia and South Asia

Seeking investors / contractors on EPCF model

Kadhdhoo
International Airport
is envisioned to have
the ability to cater to
1 million passengers
per annum

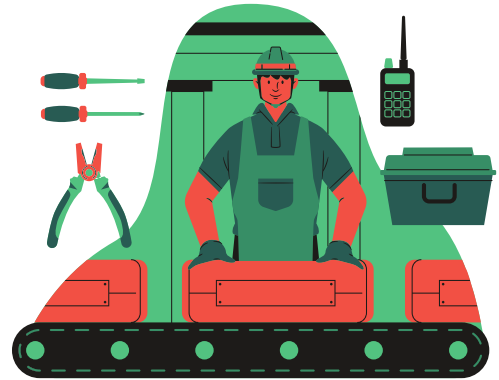


DEVELOPMENT CONCEPT



*More investment opportunities
available in areas of Fisheries,
Agriculture, Maritime and
Trade...*

where you start



UNSOLICITED PROPOSALS POLICY

Submit your proposals
to the Ministry of Economic Development at **proposals@trade.gov.mv**

The USP process will take you through 5 easy steps

1



Pre-submission
and concept
review

2



Submission and
compliance
check

3



Strategic
Assessment

4



Negotiation and
Finalization of key
terms

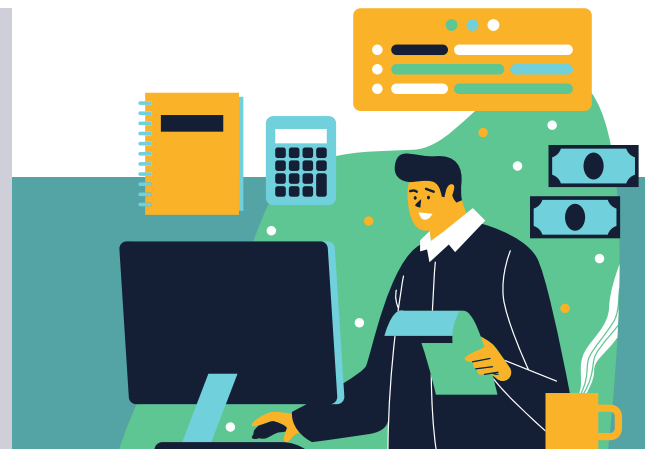
5



Enter into
agreement

For more information, contact us at:

INVEST MALDIVES
MINISTRY OF ECONOMIC DEVELOPMENT
4TH FLOOR, VELANAAGE BUILDING
AMEER AHMED MAGU, 20096
investmaldives@trade.gov.mv



**We look forward to
welcoming you to Laamu**

